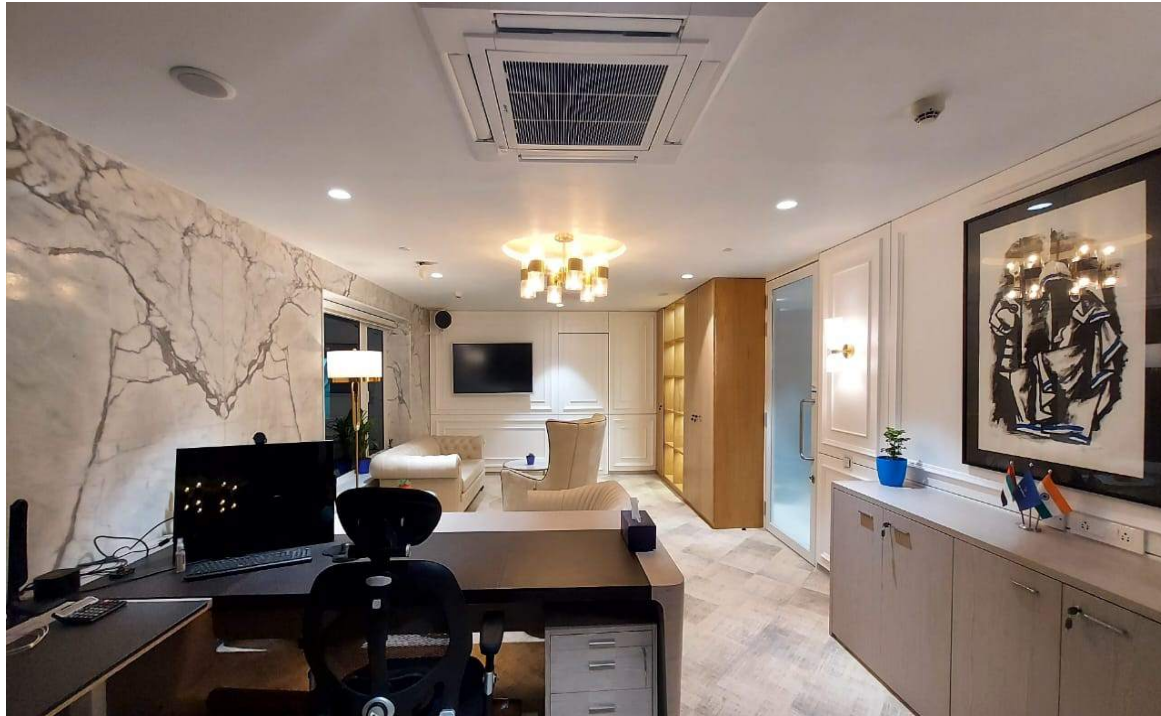


CASE STUDY

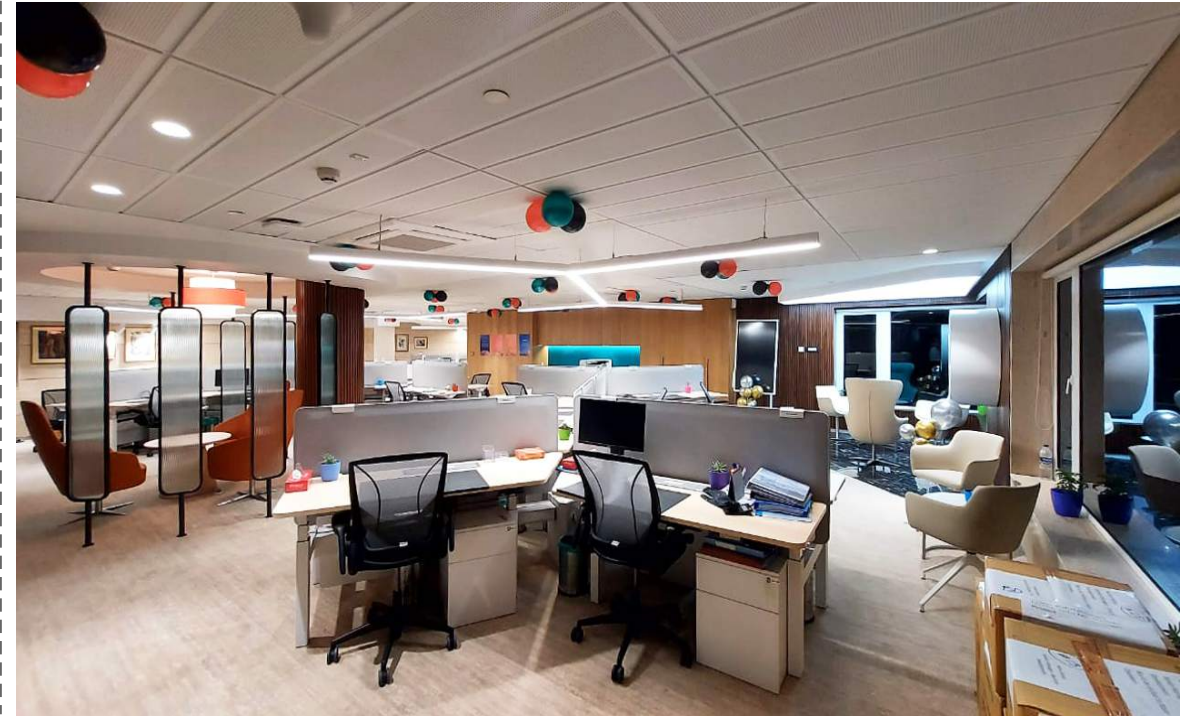


+ Main Reception

DP World
Nariman Point, Mumbai.



MD Cabin



Open Office

Brief:

The office has two floors. The main office that is the work space area forms the part of 15th floor while the social spaces such as Café, Recreation and Experience Center forms the part of the 12th floor. Thus the separation of work and social spaces helps one to focus and unwind with ease.

Location:

12th & 15th Maker Chamber 6, Nariman Point, Mumbai, MH.

Area:

7,500 Sq Ft.





Collaborative Space



Meeting Room

Concept:

One of the main design parameter was the site location. Half of the office floor plate has sea view. All the key areas were designed keeping this aspect in mind.

Uniqueness:

The design of the office is push keeping the sensibilities of client in mind. At the same time it's easy to maintain.

